



Engineered  
Solutions

# ENGINEERED SOLUTIONS



Ritmac brings to the market place over 50 years of engineering experience working to ensure that its products and services meet and exceed customers' quality expectations. Our engineering team is dedicated to creating value for its customers by providing technologically advanced solutions and services. Our aim is total customer satisfaction regardless of the locality, time and how technically challenging the request might be.







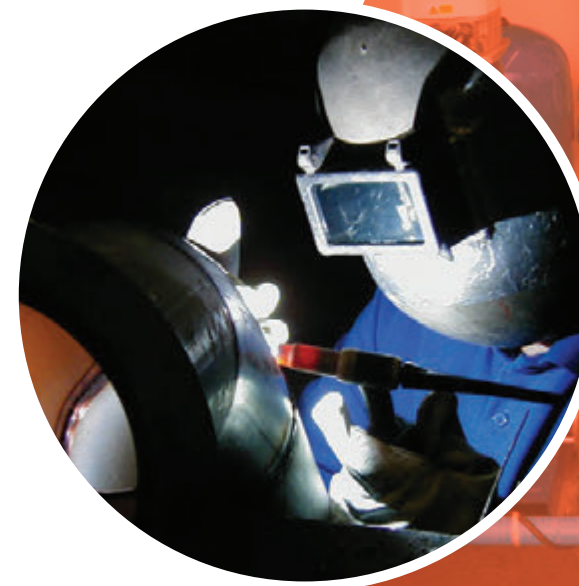
## PROCESS EQUIPMENT:

- Air packages, Industrial Ejectors & Vacuum Systems.
- Boilers, Calorifiers, Plate heat exchangers.
- Sewage, Storm and Final effluent systems.
- Rainwater harvesting systems
- CET Systems
- Control panels & Variable speed drives.

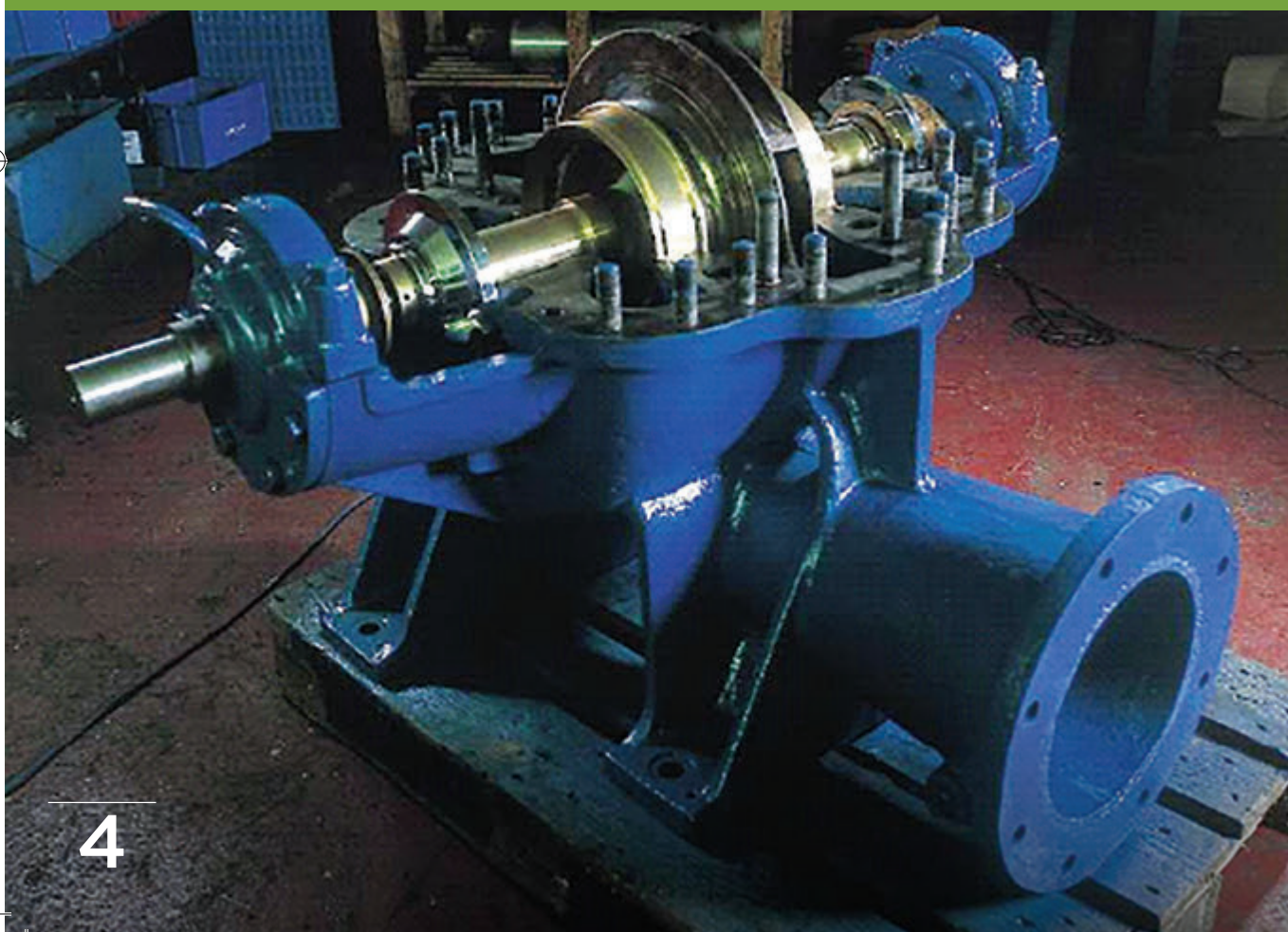


## ACTIVITIES & SERVICES

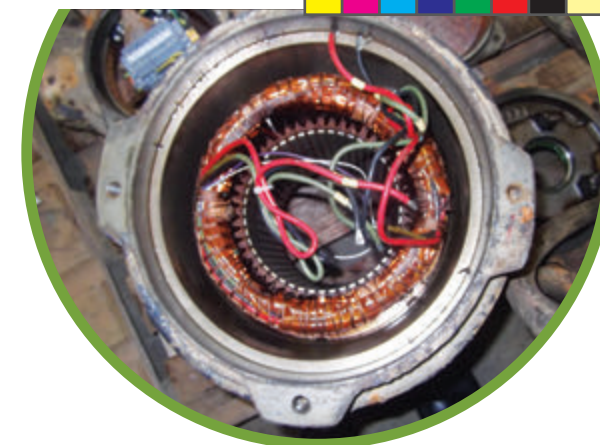
- Planned Maintenance & Service Contracts.
- Technical consultancy.
- Project management & engineering.
- Inspection & testing.
- On & off site rotating equipment repairs & modifications (Pumps, compressors, Industrial fans)
- Installation & commissioning.
- Troubleshooting and breakdown assistance.



# ROTATING EQUIPMENT REPAIRS



4

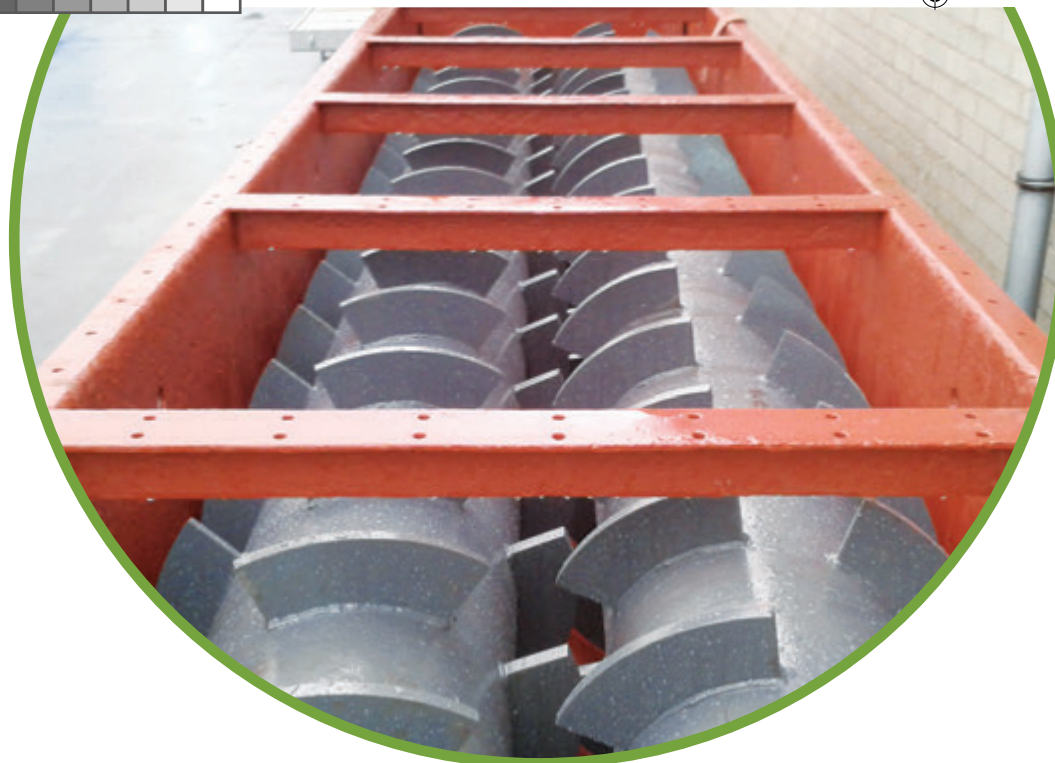


At Ritmac we know pumps are at the heart of any liquid moving system and efficient maintenance of new or existing pumping installations can ensure more reliable and effective operation, which is essential in the prevention of equipment and system failure.

Our Repair and Service Department is committed to providing clients with a friendly service whilst resolving your immediate pumping problems.

From routine check-ups to emergency repairs our constant care approach ensures that failures, along with production and plant downtime, are minimized.





We offer a rotating equipment repair service which can be undertaken either on or off site.

Our repair service includes collecting the faulty plant from site, cleaning and stripping down to investigate the problem and then advising the next course of action. We put all our findings in a quotation detailing all the costs associated with the repair and can also offer a full photographic record of all the broken parts if required. On receipt of the client's instruction to proceed with the rotating equipment repair it will be reassembled, hydrostatically tested where practicable and delivered back to site.



# MAINTENANCE AND SERVICE CONTRACTS

Ritmac offer a comprehensive planned maintenance scheme for the types of plant, systems and rotating equipment detailed below;

- Sewage & Drainage systems.
- CET Systems.
- Flood prevention systems.
- Effluent treatment plants.
- Rain water harvesting systems.
- Water feature installations.
- Biogas installations.
- Booster sets.
- Pressurisation Units.
- Boilers, Calorifiers, Plate heat exchangers & Valves.
- Industrial Pumps.
- HVAC pumps.







Clients with a service contract receive preferential terms for parts and Labour. In addition priority response is given to their service and breakdown orders.

The benefits of the Ritmac Service contracts are:-

- **Professional technical advice.**
- **Greater life expectancy.**
- **Reduced risk of breakdown & inconvenience.**
- **Out of hours on call service.**

If possible repairs are carried out on site to reduce cost and downtime of your system. Major repairs of equipment that cannot be carried out on site will be carried out in our well-equipped workshops.



# BUILDING SERVICES PUMPS, SPARES & ACCESSORIES

Ritmac provide pumps, spares and accessories for all applications from a wide range of quality leading manufacturers to meet the needs of HVAC industry. Our team of trained engineering staff await your call to advise you on the correct pump, part or accessory for your application.



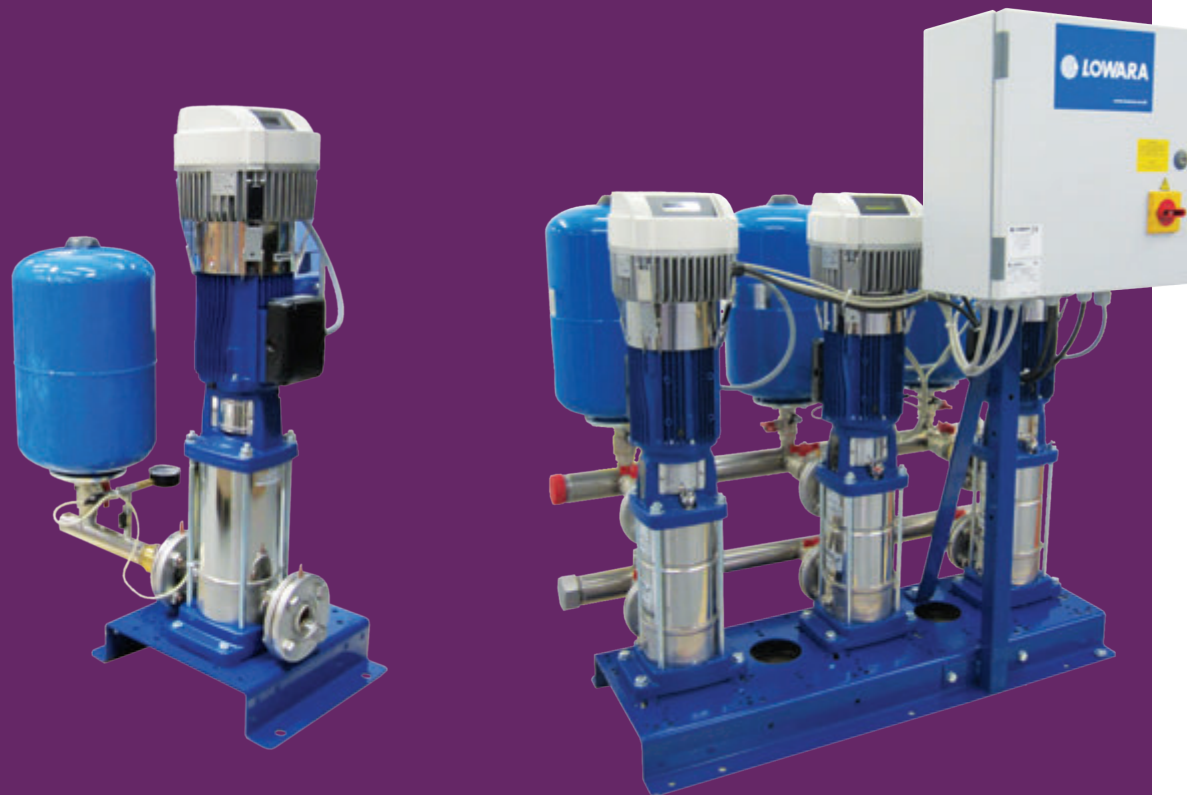




- End suction Centrifugal
- Glanded Single & Twin Centrifugal
- Multistage Centrifugal
- Glandless Single & Twin Centrifugal
- Shower single & twin



# BOOSTER SETS & PRESSURISATION UNITS



## PACKAGED BOOSTER SETS

We provide a wide range of single and multiple pump booster sets to meet the requirements of the application, which can be fixed or variable speed. In addition we can provide these with break tanks to meet local byelaws.







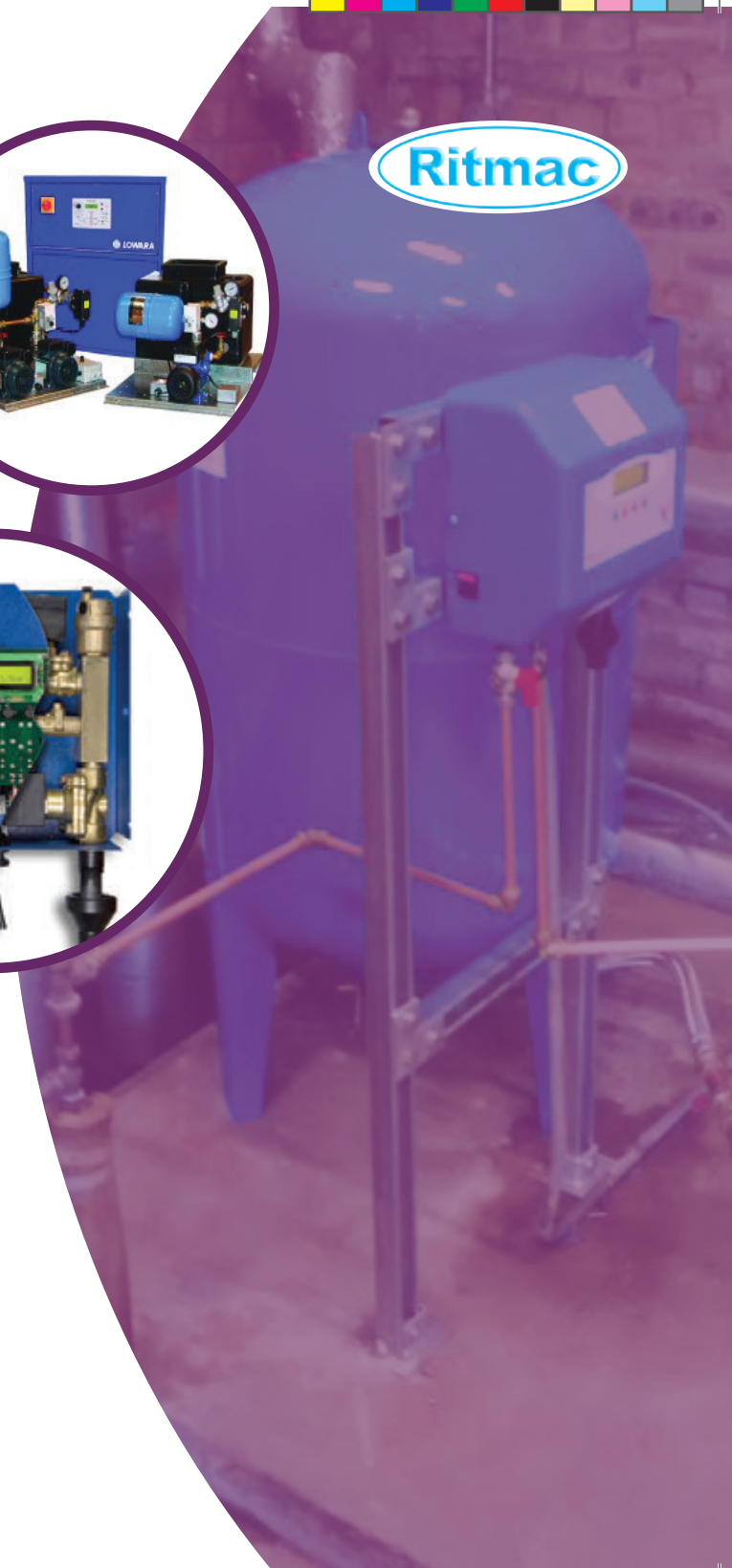
## PRESSURISATION UNITS

We offer a comprehensive range of pressurisation units designed for heating or chilled water installations. You can select from open sets, fully enclosed, pumpless and single or twin pump options. To accompany these products we stock a range of horizontal and vertical pressure vessels.



## FIRE-FIGHTING BOOSTER SETS TO EN 12845

The range comprises models with 1 or 2 service pumps powered by electric motors or diesel engines. An optional pilot pump can be provided to pressurize the fire-fighting system.

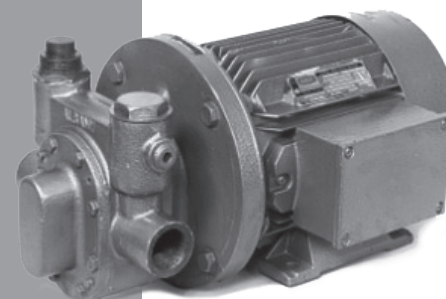


# INDUSTRIAL PUMPS, SPARES & ACCESSORIES

## INDUSTRIAL PUMPS

To select the correct pump our engineers must firstly understand your application.

Our extensive industrial pump range offers solutions for the movement of fluids from clean water to effluent, sludge, waste, drainage, abrasive liquids and chemicals for virtually any application.







Some of the industries/applications our range of industrial pumps are suitable for include:-

- Construction
- Civil Engineering
- MOD
- Waste Treatment
- Agriculture
- Sewage Treatment
- Quarrying and Mining
- Dewatering
- Chemical Industry
- Petro-chemical
- Pulp and Paper Industry
- Automotive Manufacturing
- Food Manufacturing
- Brewing
- Distilling
- Power Generation



# SUBMERSIBLE, BOREHOLE, SEWAGE, DRAINAGE & STORM



14



Ritmac have submersible pumps for borehole abstraction, dirty water, sewage, final effluent, drainage and storm applications. Our engineers select the best pump for your application including hydraulic performance and materials.





Ritmac



- Submersible Borehole
- Submersible Macerator
- Submersible Drainage
- Submersible Chopper
- Submersible/Immersible Sewage Incorporating Channel, Vortex & Screw impellers,
- Mixers



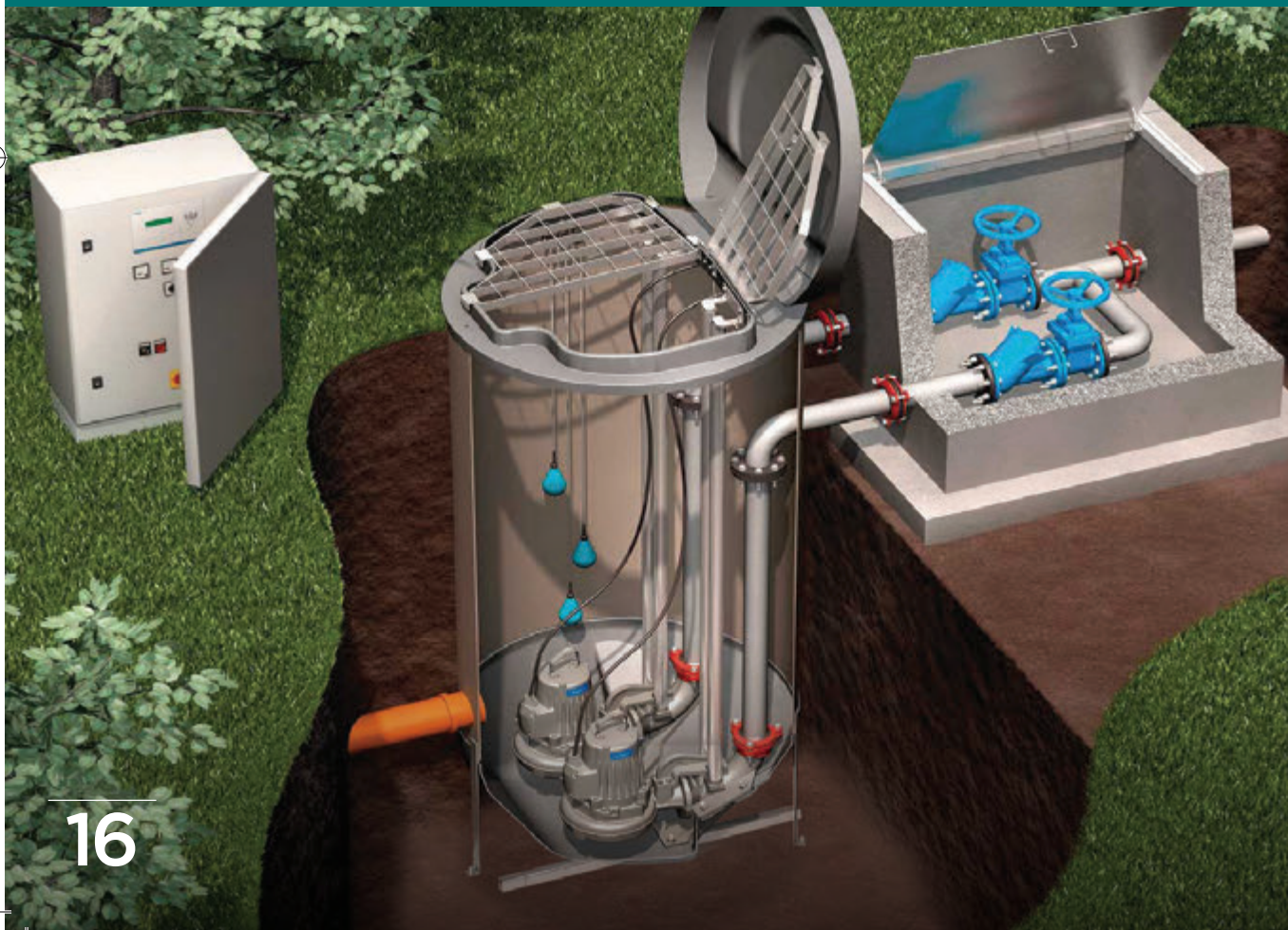
# SEWAGE/STORM PUMPING SOLUTIONS

## ADOPTABLE SEWAGE STATIONS

Ritmac have been at the forefront of sewage pumping solutions in Scotland for over five decades. We have worked with Scottish Water and their consultants to fully understand their requirements for adoption.

Our aim is to assist you with the adoption process and as part of this we will deliver a fully compliant document package, including manuals to the consultants'/ authorities standards.

This will then be followed by our installation of the equipment that fully complies with the latest Sewers for Scotland Standards & Scottish Water Specification.







## PACKAGE SEWAGE/DRAINAGE STATIONS

Our packaged stations offer cost and timescale savings, making a viable alternative to concrete installations. The chambers are manufactured in GRP or HDPE and come in a variety of sizes to suit different loading conditions.

Your package will come complete with pipework pre-assembled in the chamber, ready for installation into the ground, after which the pumps and controls can be added.

## STORM/FLOOD SYSTEMS

Limiting potential damage of coastal and inland flooding requires an engineered pumping solution that is efficient and reliable. Our engineering team have the know-how and the pumps/control solutions to cope with these heavy demands. Flood control is characterised by a requirement for a pump with high flow and low head. Our extensive range of immersible/submersible pumps for flood control are specifically designed for durable use in pumping stations, harbour management and storm water tank solutions. We have a proven track record around Scotland providing successful flood prevention pumping solutions.



# VARIABLE SPEED DRIVE & CONTROLS

Ritmac design, manufacture, supply and install bespoke control panels for all industrial segments.

Services available include:

- **Bespoke design and build**
- **On-site installations and modifications**
- **Refurbishment of existing control panels**
- **Maintenance contracts**
- **Fast and efficient service**

Ritmac stock, supply and install industrial and HVAC drives suitable for 230V 1-phase and 400V 3-phase mains from 0.2kW—3MW. We offer all types of enclosures — IP00, IP20, IP54, IP66 in wall mounting, floor standing and bespoke control panels.





Ritmac provide specialist service, repairs and support for customers' variable speed drive installations.

- **On-site/workshop repairs**
- **Regular Planned Preventative Maintenance (PPM) site visits including drive health checks and parameter settings optimisation**
- **Drive replacement/installation, start up and commissioning**
- **24 hour telephone support**
- **Nationwide coverage from our in-house installation and service team**
- **Guaranteed response times to site**
- **Advantageous service rates**
- **On site or scheduled training courses and seminars developed to meet clients' exact needs**

Ritmac are an approved, trained and recognised Danfoss Drives & Xylem service partner.



# WATER HYGIENE

---



20

Bacterial contamination of water can occur in any water system and if left untreated can lead to major health risks or an outbreak of the life-threatening Legionnaires Disease for its consumers. Businesses have a duty to ensure people working/living/visiting their site are kept safe from any exposure to contamination.

Ritmac are an independent contractor for services relating to the safety of water systems and risks from exposure to Legionella Bacteria. We work with organisations such as property management companies, hotels, facilities management companies etc. in assisting with their preventative control measures and compliance issues in line with the Governments Health and Safety Executive Approved Code of Practice (HSE ACOP L8 The control of Legionella Bacteria in water systems).





We provide a full range of cost-effective consultancy and technical water hygiene services to minimise any risk and give you peace of mind. We have a fully qualified and trained team to whom you have direct access for expert advice. This team will assess and identify risks at your site to enable them to advise appropriate recommendations and implement a control regime that works for you and is specific to your water hygiene needs. We have the ability to combine both your engineering and water hygiene needs providing you with a greater overall cost saving and service.

The variety of water treatment and water hygiene solutions that we offer are listed below:-

- **Building services compliance with legislation.**
- **Legionella Risk Assessment (BS 8580)**
- **Legionella Management & Consultancy**
- **Legi Cold Water Storage (CWS) Tank replacements.**
- **CWS Tank clean & disinfections. (BS 8558)**
- **Calorifier inspections/blowdowns**
- **Hot & Cold Water Monitoring**
- **Water Feature Design & Treatment.**
- **Quarterly Shower Sterilisations.**
- **Thermostatic mixing valve servicing.**
- **Pre-commissioning disinfections.**
- **UKAS water testing.**
- **Cooling tower inspections & treatment.**
- **Testing & treatment of closed water systems.**
- **Effluent testing.**



# WATER FEATURES



Ritmac design, install and commission mechanical & electrical equipment to operate water features.

Routine maintenance and monitoring of your water feature equipment and water quality can be undertaken.

Our engineering consultants liaise directly with architects and local authorities to offer advice on the mechanical and electrical design of, Cascades, tranquil streams/ torrents, fountains for lakes and ponds including ring, aerating, fan, millstone and sculptured jets. Specialist revolving granite balls and music and light interplay features are also available.





Our specialist team of design engineers work closely with customers from conception through to completion of projects. Design facilities, technical services and complete engineering capabilities ensure the aesthetic and technical success of schemes. Early consultation for new projects can result in significant capital cost savings through design improvement.

We also undertake the restoration and recommissioning of existing water features and fountains. This could include management by our design team, installation of replacement mechanical and electrical equipment and minor civil works.

Ritmac provide the complete engineered solution for your water feature requirements.





**Ritchie, MacKenzie & Co Ltd**

Broomhill Industrial Estate, Kirkintilloch, Glasgow, G66 1TQ.

Tel: 0141 776 6274 | Email: [sales@ritmac.co.uk](mailto:sales@ritmac.co.uk)

**[www.ritmac.co.uk](http://www.ritmac.co.uk)**